

NEXT IN LINE DESIGN

Designing a Path to Foundership

Hosted by: Alexis Divis



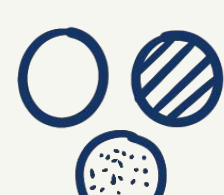
WORLD DESIGN
YOUNG DESIGNERS CIRCLE

Expanding your toolkit

Let curiosity guide you. Explore **new tools** and techniques that can shape your **creative growth**.



Software



Materials



Processes



Beyond Design

“My **toolbox** is forever filling up with the most **relevant things**. So I feel like I’ll be always **future ready**.”

What is vibe coding?

A software development approach where AI generates code from user written prompts. Instead of writing code manually, users describe what they want and guide the AI through conversational feedback.



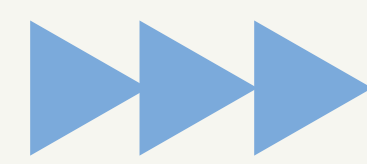
Lovable



Figma Make

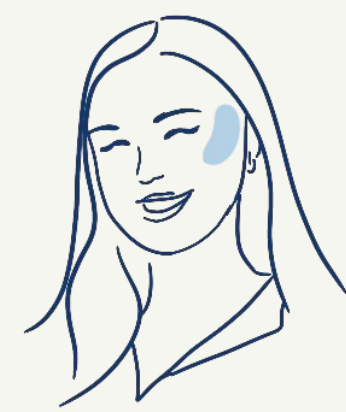


Uizard



In this episode, our guest discusses...

- How staying open and curious has led her to **unexpected opportunities** in her design journey.
- Why she created **Seasprout** to address seafood waste through **regenerative materials**.
- How building her own **design toolkit** has empowered her to remain future-ready.



in Alexis Divis

Meet the host: Alexis Divis

Alexis Divis is a multidisciplinary designer with a BFA in **industrial design** from the Savannah College of Art and Design. Inspired by her surroundings and fueled by curiosity, Alexis now works on **Johnson & Johnson's Experience Design** team (XD) and is also a member of their Technology and Leadership Development Program (JJT TLDP). She loves to explore the application of emerging technologies within the field of design and hopes to create more powerful solutions with each and every project.

Meet Rhea Thomas

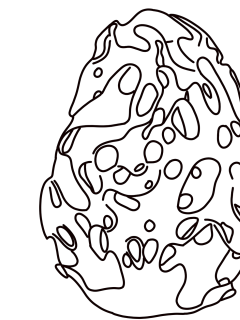
28, India

Rhea is the founder of **Seasprout**, a regenerative material design studio, and serves as a **Customer Research Lead** at **E.ON Next** within the Growth & Innovation Studio. With a background in **industrial design**, she holds a dual MA/ MSc in Global Innovation Design.

“Your ideas can become very real, you just need the right support to learn what you need to fill in those gaps.”

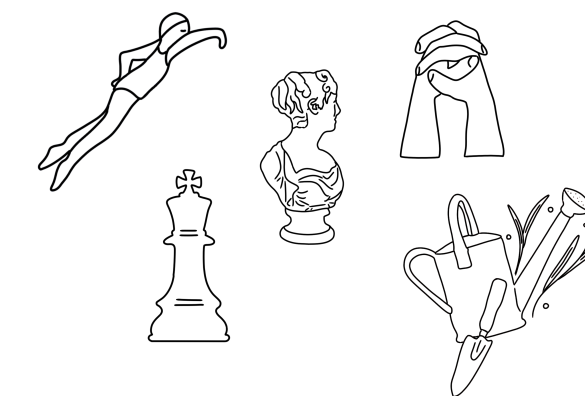
Favourite designer

Neri Oxman



Hobbies

- Swimming, rowing & playing chess
- Visiting museums and galleries
- Volunteering
- Gardening & learning new skills

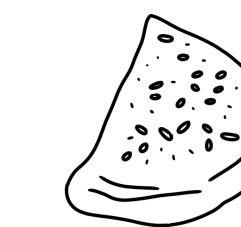


165 cm



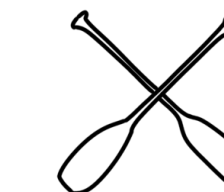
Favourite food

Eggs in almost any form



Favourite sports

Watching F1 and competitive rowing



Recommendations from Rhea



What to watch

Chasing Coral (2017)
The Social Dilemma (2020)

Design documentaries by Gary Hustwit
Helvetica, Objectified,
Urbanized and Rams



Who to follow

@daisyginsberg
@esdevlin
@superfluxstudio
@theburnoutspodcast

Design Emergency



Building a Better Future
Alice Rawsthorn and Paula Antonelli

What to read

Design Emergency: Building a Better Future
by: Alice Rawsthorn & Paula Antonelli

About Rhea's Design Studio

Seasprout is a **bio-material innovation** made from prawn shells sourced from the seafood industry. It offers a **sustainable alternative to single-use plastics** and can be used across a range of packaging applications.



Regenerative System

Prevents seafood factory waste from ending up in landfills and waterways.

Circular Loop

Material is applied to create circular systems: A plant pot made from this material, acts as fertilizer for the plant.

I come from the coastal town Mangalore, India, where I grew up eating a lot of seafood. While traveling in Japan during my master's programme, I became more observant, I started uncovering problems, or discovering things that I hadn't thought of before.



We want to **hear from you!** Look out on social media for updates to stay engaged.



Tune in to the **Next in Line** podcast to join the conversation!



@worlddesignorg



@worlddesignorg

LISTEN NOW!

Creators:

Natalia Enriquez Martinez
Başak Onbaşıoğlu
Andrea Robredo Cernicchiaro